

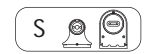
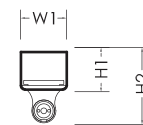
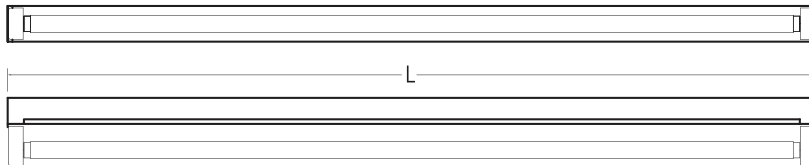
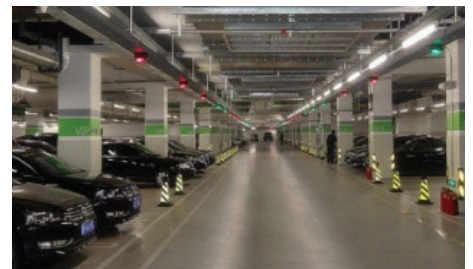


FLUORESCENT LUMINAIRES

T8 Batten Type



- High quality cold-rolled steel housing of thickness 0.6 mm.
- Five-stage zinc phosphate pretreatment for rust resistance.
- Finished with white polyester powder by two-stage electrostatic method.
- Cable THW 0.5 sq.mm. 105°C (TIS.11-1988 STANDARD)
- Suitable for general purpose with high efficiency requirement.
 - Spring-locked type lamp holder (G13)
 - Rotary-locked type lamp holder (G13)
 - Waterproof type lamp holder
- Application : Carpark ,Canopy



MODEL	Type	Dimension			
		W1	L1	H1	H2
CL-BT-01B-118	1 x FL T8 (S)	55	635	45	105
CL-BT-01B-218	2 x FL T8 (S)	125	635	45	105
CL-BT-01B-318	3 x FL T8 (S)	180	635	45	105
CL-BT-01B-418	4 x FL T8 (S)	240	635	45	105
CL-BT-01B-136	1 x FL T8 (L)	55	1245	45	105
CL-BT-01B-236	2 x FL T8 (L)	125	1245	45	105
CL-BT-01B-336	3 x FL T8 (L)	180	1245	45	105
CL-BT-01B-436	4 x FL T8 (L)	240	1245	45	105

* (S) = Short Lamp (600 mm.) , (L) = Long Lamp (1200 mm.)